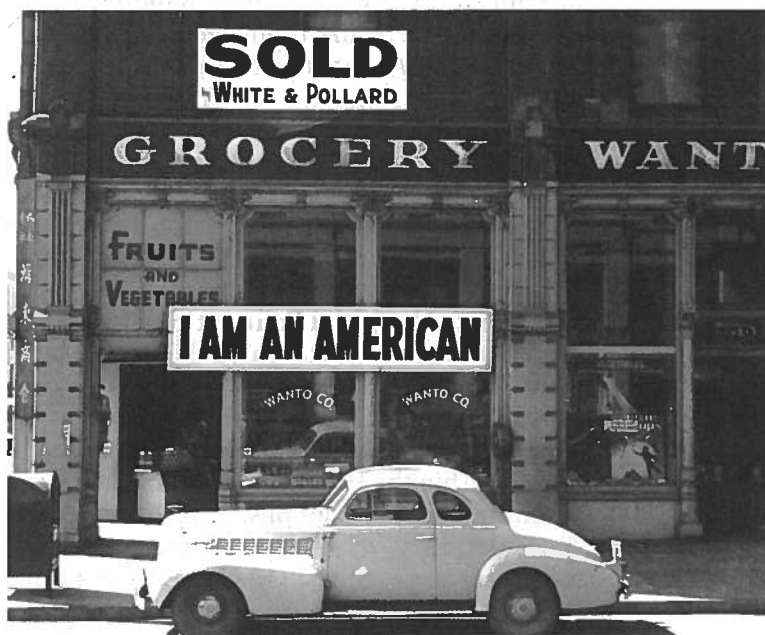




WASHINGTON

Recipient: Bainbridge Island Japanese American Exclusion Memorial
Project Title: Bainbridge Island Japanese American Exclusion Memorial
Grant Award: \$182,725
Site(s): Bainbridge Island/Eagledale Ferry Dock, Kitsap County, WA
Description: Constructed at the site of the Eagledale Ferry Dock, the Bainbridge Island Japanese American Exclusion Memorial project marks the historic site where the first community of Japanese Americans were removed from their homes during World War II and put on a ferry to Seattle, beginning their forced removal to confinement sites. This grant award supports the completion of the Bainbridge Island Japanese American Exclusion Memorial Wall, which is an integral component of the memorial site. The 276-foot-long memorial wall is made of granite, basalt and cedar, and is built upon Taylor Road, where Bainbridge Islanders were escorted by Army soldiers to the ferry landing. The wall's length also is symbolic, as each foot marks the number of Japanese Americans who were removed from their homes. With the 2010 Japanese American Confinement Sites grant, the Bainbridge Island Japanese American Exclusion Memorial will fabricate and install the interpretive displays on the wall, which will include images, art, and historical information.



The Japanese American owner of this store placed the "I am an American" sign in the store front on December 8, 1941, the day after Pearl Harbor. Photo courtesy: The Bancroft Library, University of California, Berkeley.

Recipient: Densho: The Japanese American Legacy Project
Project Title: Japanese American Confinement: Reference and Resource Website
Grant Award: \$166,145
Site(s): Multiple sites, counties and states
Description: Through this project, Densho will collaborate with ten scholars of Japanese American history to develop a reference and resource website. Linked to the Densho database, the new encyclopedic website will provide access to scholarly articles, primary sources, and links that recommend resources and curricula on Japanese American history. The website will hold 250 short articles and 40 larger articles on World War II Japanese American removal and detention, and will cater to the basic research needs of young students, as well as to the in-depth needs of scholars. The materials will be organized in a user-friendly manner, and will include biographies and testimonies of internees, contextual interpretations, key terminology, interactive maps, a timeline of World War II events, and resources on topics related to the early discrimination and wartime experiences of Japanese Americans and the redress era. To help disseminate the information on the website, the articles also will include links to social networking sites such as Facebook.