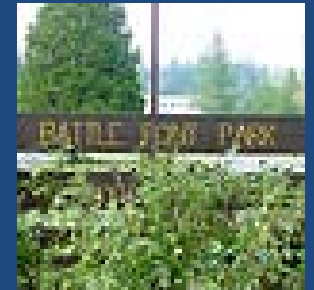


Public Meeting for Battle Point Park Master Plan Update



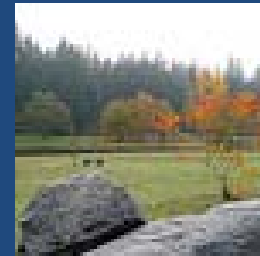
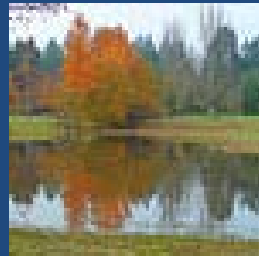
Bainbridge Island Metro Park & Recreation District
17 November 2009



... sustainable stewardship ... and innovative opportunities.

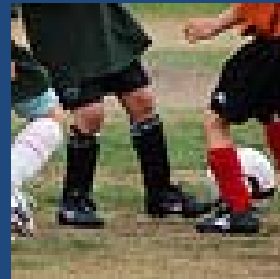
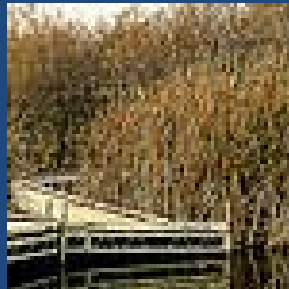
Tonight's Meeting

- Presentation of general materials, volunteer program, and group exercises
- Break out into group of about 10 people per group
- Group reports and meeting summary



Meeting Goals

- Provide open forum to hear public comment on opportunities and views of Battle Point Park
- To be clear to the process and outcomes of the master plan update process
- Acknowledge the findings in the Park District's Comp Plan and CIP meetings

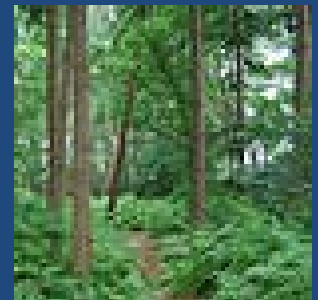


What is a Master Plan Update?

- *A document that builds upon previous planning*
- *A document that guides decisions concerning future physical development*
- *A process that evaluates various characteristics of a site – physical / environmental / etc.*
 - *A reflection of the community*

A MP Update is not -

- *An absolute document – it is a guide*
- *A detail or analysis based document*



About This Process

- Work to satisfy Update goals

Acknowledge / Evaluate / Optimize / Guide / Develop

- Process outcomes

Clear guide and a flexible document

- Schedule

Public Meetings November and December 2009

Draft Update January / Final Update February 2010

Battle Point Park

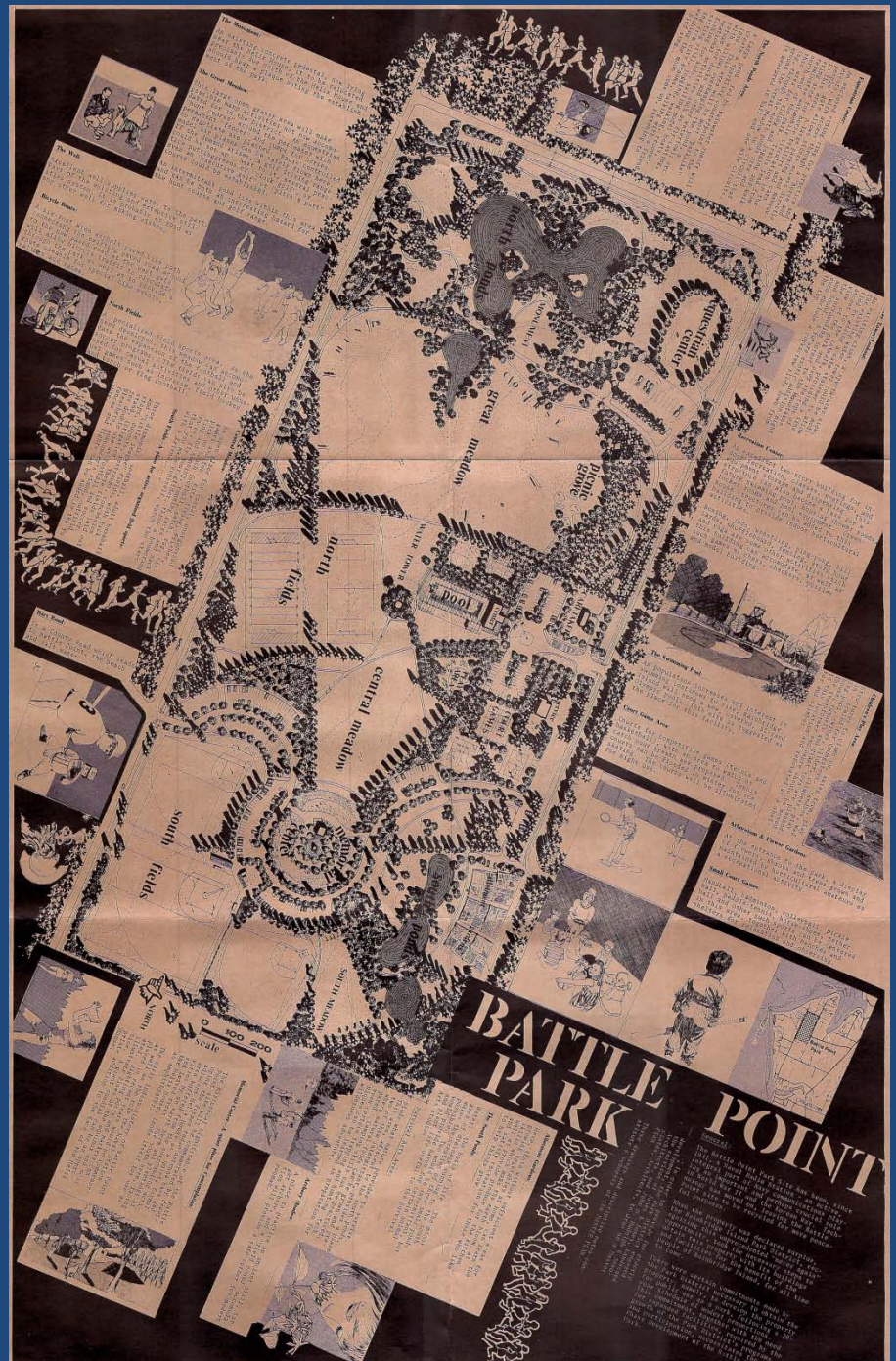
Battle Point Drive



Frey

Arrow Point Drive

1973 Master Plan



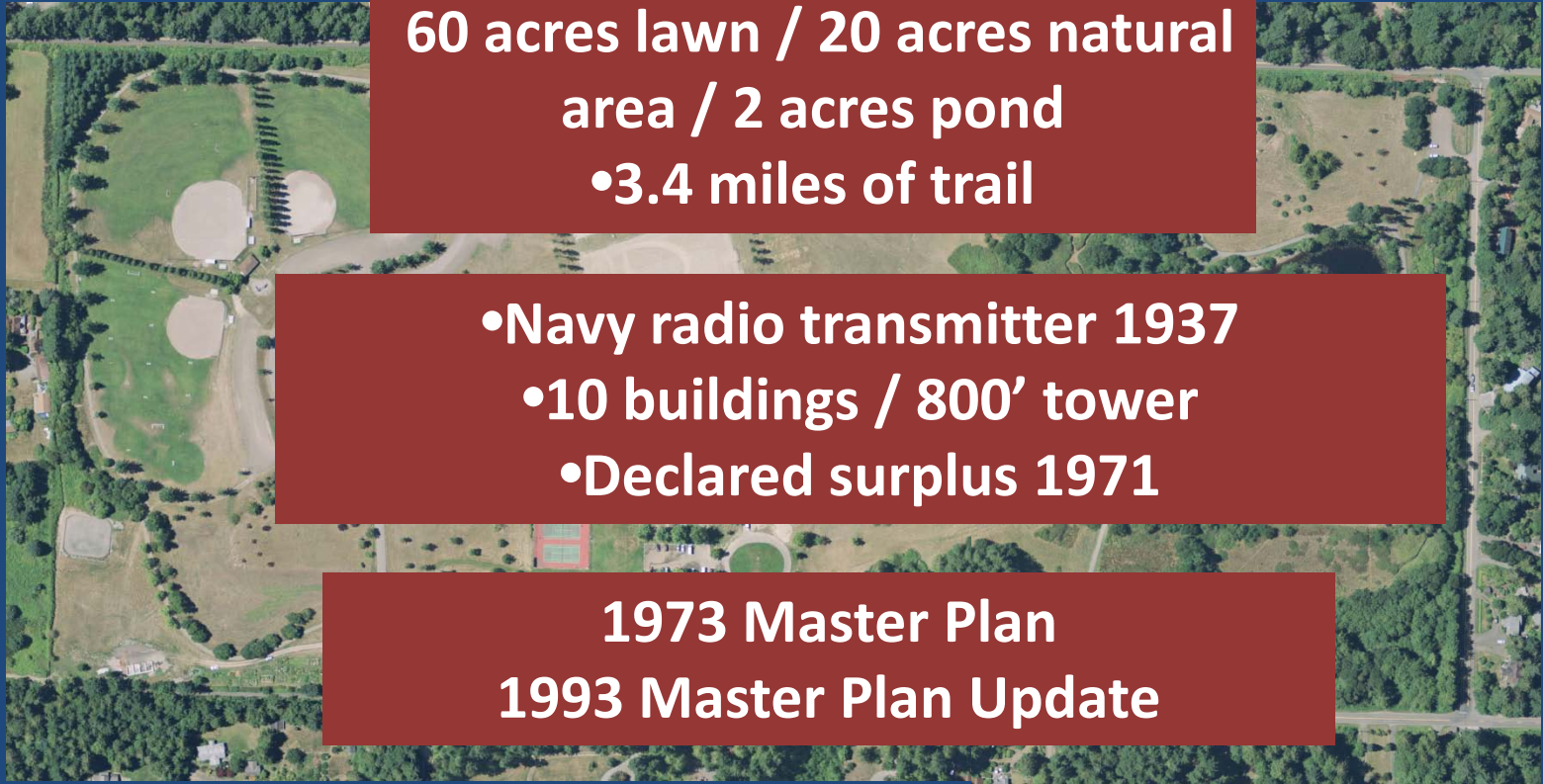
Battle Point Park

- Approximately 90 acres –
60 acres lawn / 20 acres natural
area / 2 acres pond
- 3.4 miles of trail

- Navy radio transmitter 1937
- 10 buildings / 800' tower
- Declared surplus 1971

1973 Master Plan
1993 Master Plan Update

Connected to Fairy Dell Trail and
Forest to Sky Trail (Grand Forest)



Findings

- Comprehensive Plan recommendations -
Dog park / Site interpretation / Tennis / Skateboards
General deficits – trails / playgrounds / picnic areas
No deficit – soccer / baseball fields
- CIP Meetings (selected for BP Park) –
Restrooms / Observatory upgrades / Dog area /
Improved trails / Parking and road improvements
 - Wetland Delineation

1. Battle Point Park **Today**

What should not change?

These can be built elements or other things about the park.

Place up to **three green dots** on the areas that should not change and explain why.

What must change?

This can be built elements or other things about the park.

Place up to **three orange dots** on the areas that should change and explain why.

2. Battle Point Park – Future

What new uses should be considered for the park?

Consider active play / children's play / passive activities / etc.

What other opportunities for change to you feel are appropriate?

3. Battle Point Park - Character

As a group select one word in each pair that best describes how the group feels the park should be.

Tranquil or Invigorating / Wild or Cultivated

Place up to four yellow dots on the images that you feel best embodies the ideal character of the park

Describe the park in 2022 – after all the improvements have been completed.

Stewardship and Volunteering

- An expanded program to offer greater involvement with park facilities and programs
 - Park and Trail Stewards
 - Restoration, Cultural, and Sustainable Stewards
- Event volunteers – sport fields / weeding / trails / research / etc.

Battle Point Park

A second public meeting
15 December

Please send additional
comments to
kent@biparks.org

bd

Meeting notes
will be posted on
Parks' website

Battle Point Drive



Arrow Point Drive